

# Lake Monitoring 2023



Prepared for Lake Tishomingo by Gateway Lake Management LLC

Visit Date: Thursday 4/6/2023

## Visit 1 Observations

The lake monitoring began this Thursday 4/6/2023. It appears the recent rains really brought in some debris and water levels were a bit high, which left quite a bit of the litter up onto many residences, docks and yards. This has also caused much of the lake to be very murky with suspended sediment.

Small green blobs the size of a dime can be seen sparingly when picked up; they quickly separate showing they are in fact part of a small planktonic algae bloom (as seen in picture 1). A very minor amount of filamentous algae can be seen mainly growing on the rip rap of the dam (picture 2).

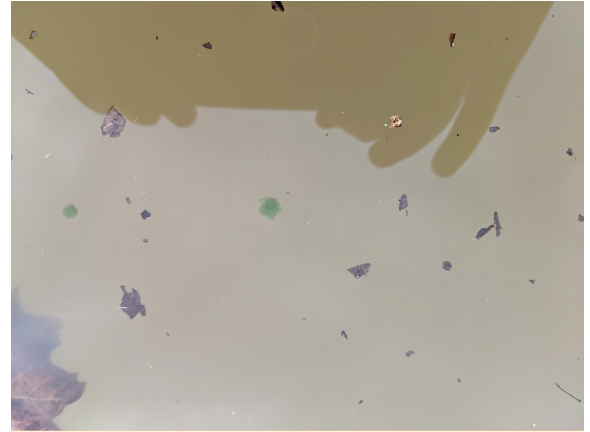
Tossing the throw rake for submersed vegetation yielded no live vegetation. However, quite a bit of foliage could be dragged from the shallow areas back in coves (picture 3).

All in all the lake is in a perfectly normal condition for this time of year with a slight uptick in nutrients most likely from the absence of the southern naiad and pondweeds killed off last season.

## Water Testing

The water test was collected in the center of the lake. Oxygen levels experienced a slight boost from the heavy inflows as well. This lake is largely at the will of whatever is being washed in from the large creek that feeds it. I would expect much of this to remain the same until after the spring rains end.

(continued on page 2)



Picture 1



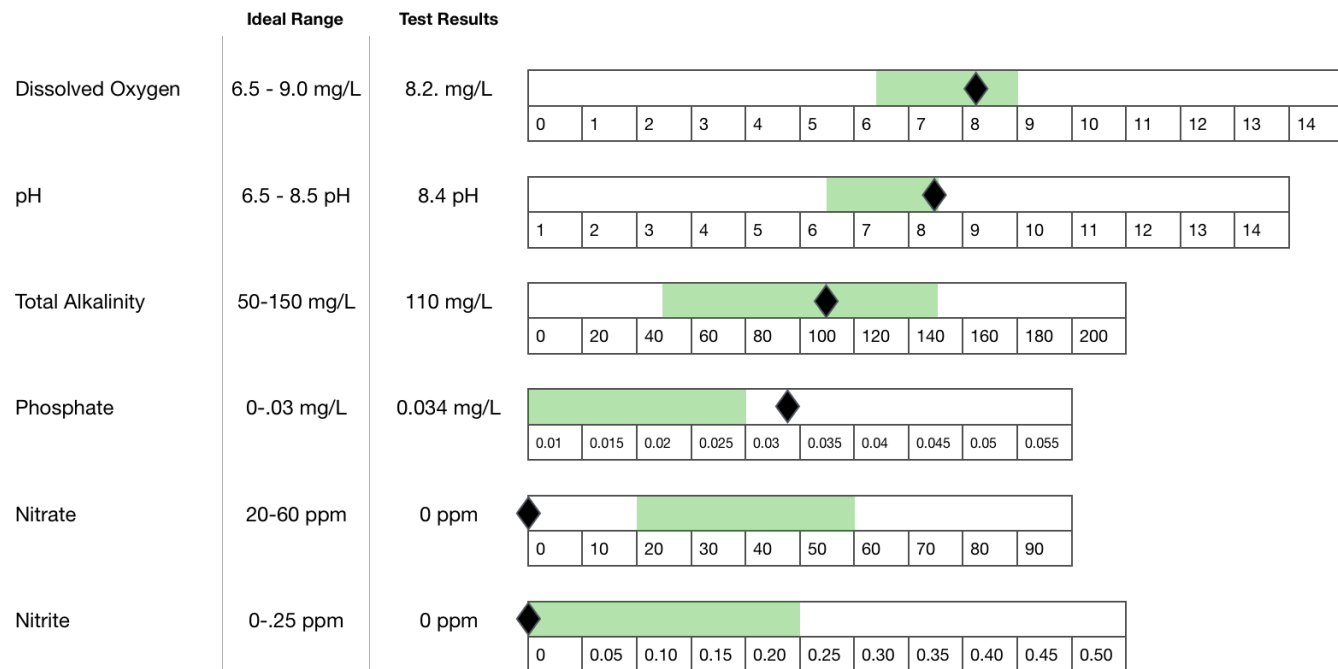
Picture 2



Picture 3

**Sample Collected:** 4/6/2023 @ 10:45AM  
**Weather Conditions:** Partly Cloudy 47°F

**Figure 1:**



Note: The water test results estimated above are collected for the applicator’s informational purposes to assess the potential for vegetation growth and are not evaluated by an accredited or certified laboratory. Water chemistry can vary day to day with weather conditions and site conditions.

To learn more about some testing parameters, see links below:

- <https://www.epa.gov/national-aquatic-resource-surveys/indicators-dissolved-oxygen>
- <https://www.epa.gov/national-aquatic-resource-surveys/indicators-nitrogen>
- <https://www.epa.gov/national-aquatic-resource-surveys/indicators-phosphorus>
- <https://www.epa.gov/caddis-vol2/ph>